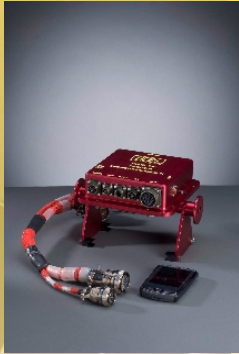


ACES Model 560

PWC-JEDA

Jet Engine Data Acquisition Module



Collects data from PWC JT15D-5/5R, PW530A, and PW535A engines

Reduce test and troubleshooting time

Reduce fuel consumption

Simple Installation

Wi-Fi communications between JEDA and PDA

Guaranteed reliability with industry-unique 5-year warranty on workmanship and materials

Integrated Model 560 PWC-JEDA system includes all necessary hardware and software

Increase Aircraft Availability

The **ACES Model 560 PWC-JEDA** (Jet Engine Data Acquisition Module) is a data collection device designed to interface to selected Pratt&Whitney Canada engines and communicate with Pratt&Whitney Canada's MonEEC PDA application operating on a personal digital assistant (PDA). This powerful combination permits the total electronic troubleshooting of engine issues on JT15D-5/5R and PW530A/535A powered aircraft.

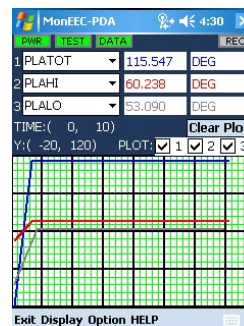
The **Model 560 PWC-JEDA** installs easily on the existing JT15D-5/5R Engine Control Unit (ECU) or PW530A/535A Bleed Valve Controller (BVC) using a quick release mounting system. Electrical connection is completed by installing a harness between the existing ECU harness and the ECU. The unit is energized by the power supplied to the engine control and requires no external power connections. The Model 560 PWC-JEDA communicates using a Wi-Fi link to a personal digital assistant (PDA) running Pratt&Whitney Canada's MonEEC PDA application. The Wi-Fi link simplifies installation and improves safety by removing the need for any cable routing between the engine and the aircraft cabin.

The data acquisition process is controlled by Pratt&Whitney Canada's MonEEC PDA application running on a personal digital assistant. The usage of the PDA as the controller reduces the overall system cost while increasing its portability. This application permits the user to:

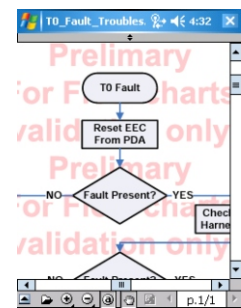
- Query the engine for Fault Codes
- Link Faults directly to the Fault Isolation Charts
- Monitor engine signals (PLA, N1, N2, ITT, etc.)
- Record engine signals for troubleshooting
- Collect data for on-wing performance analysis
- Plot Engine Control Parameters
- Rig PLA's quickly and accurately



Query the engine for Fault Codes



Monitor engine signals (PLA, N1,N2, ITT, etc.)



Fault Isolation Chart

Collecting data with the **Model 560 PWC-JEDA** and PDA gives you a precise and repeatable method of measuring engine parameters for diagnosing engine issues and performance.

ACES Model 560

PWC-JEDA

The Model 560 PWC-JEDA, kit includes:

ACES Model 560
PWC/JEDA unit

PDA with accessories and
MonEEC PDA application

GBSLite Software

Carrying Case for the
complete kit

Engine Interface Cables Available include:

Harness Cable for
interfacing with the
PWC530A/535A BVC

Harness Cable for
interfacing with the
JT15D-5/5R ECU

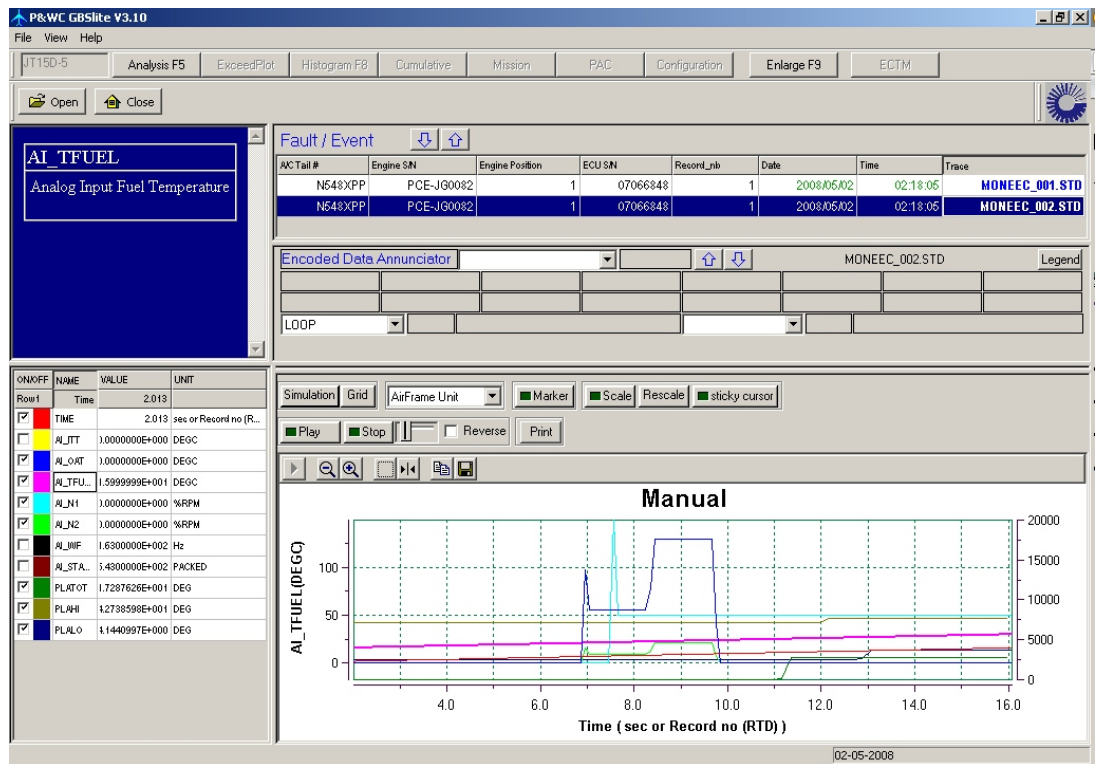
Planned optional accessories include:

Outside Air Temperature
(OAT) probe and cable

Fuel Flow/Temperature
probe and cable

The data collected with the MonEEC PDA application can be transferred to Pratt&Whitney Canada's GBSLite software for analysis. This software permits:

- Powerful tool to review all data recorded by **Model 560 PWC-JEDA**
- Links fault code to maintenance actions (Fault Isolation Charts) direct into the Interactive Electronic Maintenance Manual (IETM)



ACES Systems/TEC Aviation Division

10737 Lexington Drive, Knoxville, TN 37932 USA

Telephone 865.671.2003, Fax 865.675.1241

www.acesystems.com

Creating better aviation maintenance solutions...



JEDA and ACES Systems are products and trademarks of TEC.

GBSLite and MonEEC are products and trademarks of Pratt&Whitney Canada a United Technology Company.

Copyright © 2008, TEC All rights reserved
Specifications subject to change without notice.