



Application Note

| | |
|--------------------------------|----------------------------|
| Application Note Number | E-HO-TFE731-3A/B/C-4040-VI |
| Version | 1.0 |
| Function | Engine Vibration Survey |
| Airframe | Various |
| Engine | TFE731-3A/B/C |
| E-Setup Number | E-HO-TFE731-3A/B/C-4040-VI |
| ACES Systems Analyzer | Viper 4040 |
| Firmware Version | 1.04 or Higher |
| Procedure | N/A |

Introduction

This Application Note is required to perform an engine vibration survey on all airframes with TFE731-3A/B/C engines. This Application Note describes the steps necessary setup the equipment and the analyzer

Required Equipment: The following equipment is required to accomplish a single engine fan trim balance.

| Item | Quantity | Description | Part Number |
|------|----------|---|--------------|
| 1. | 1EA | Analyzer, Viper 4040 | 10-100-4040 |
| 2. | 1EA | Cable, Vibe, 6 Pin Generic, 50 Ft. | 10-320-0127 |
| 3. | 1EA | Interface, (SENSOR SPECIFIC) See Optional Equipment below or call ACES. | TBD |
| 4. | 1EA | BOLTS, TFE731-3A/B/C, THRU-5 VIBE SENS MOUNT (2 Bolts) | Z22-430-0062 |
| 5. | 1EA | MOUNT, SENSOR, TFE731-2, THRU -5 1/4X28 | 22-430-0061 |
| 6. | 1EA | Sensor, Vibration (See Optional Equipment below or call ACES) | TBD |

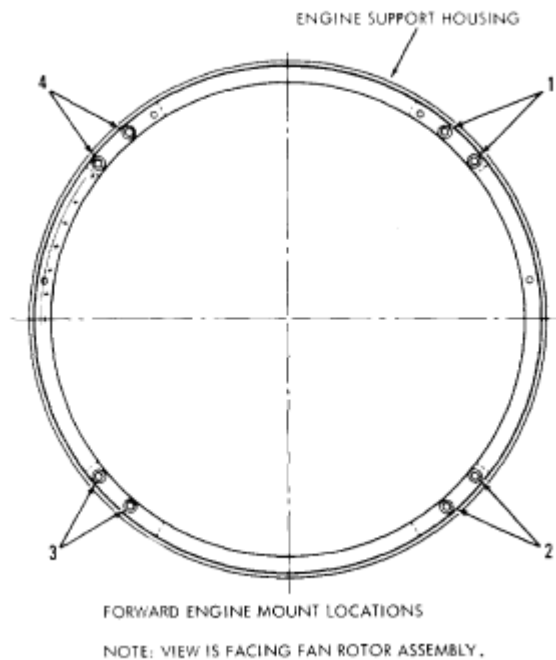
Optional Equipment: The following items are optional sensor and sensor interface cables. You may choose either sensor and interface combination. if you are conducting a dual engine balance job, double the number of items 2 thru 6 above.

| | | | |
|----|-----|--------------------------|-------------|
| 7. | 1EA | Sensor, Vibe, Velo, 991V | 69-100-0064 |
| 8. | 1EA | Sensor, Vibe Accel, 793 | 69-100-0062 |

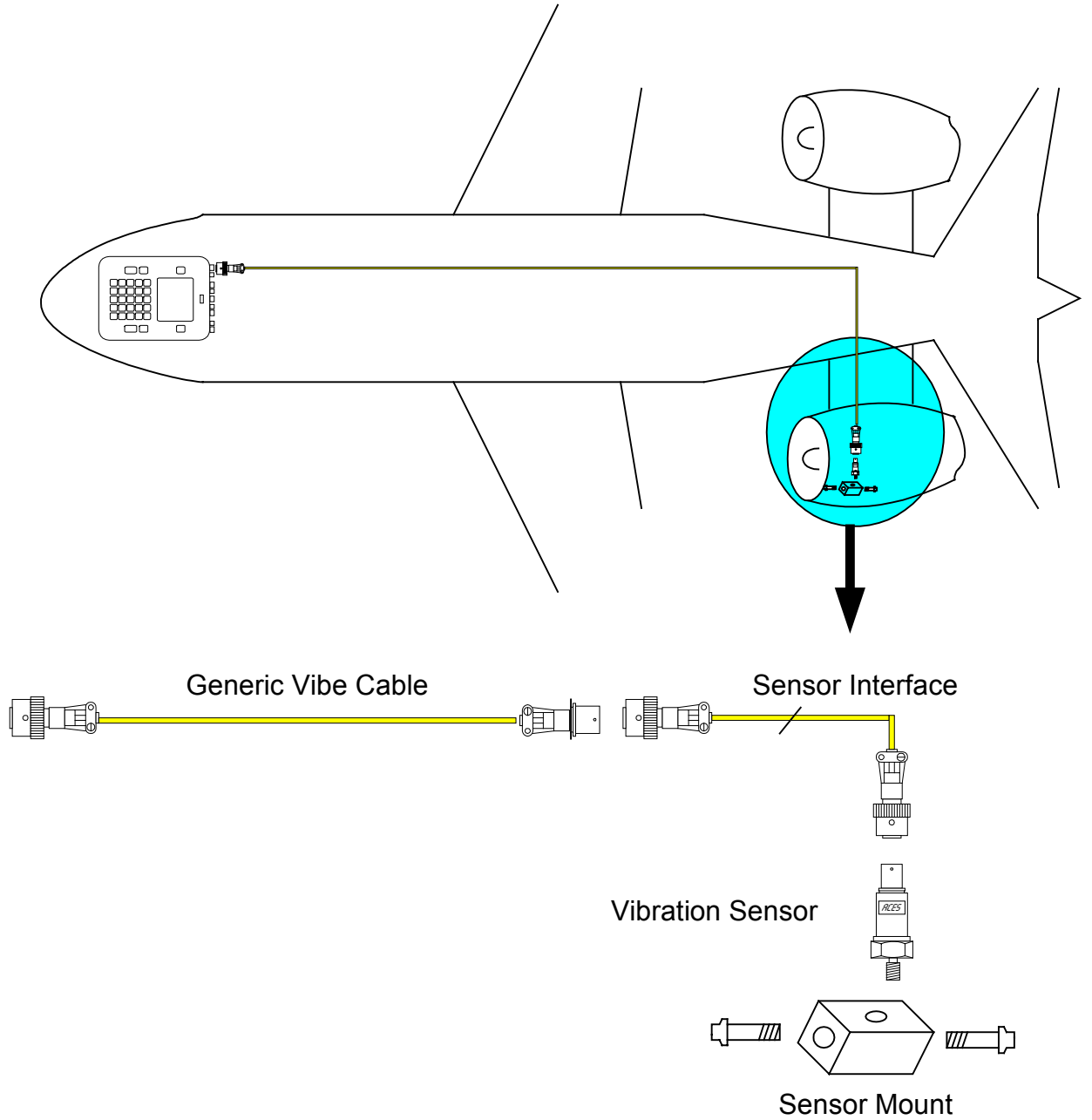
| | | | |
|-----|-----|---|-------------|
| 9. | 1EA | CABLE, INTERFACE, 793/797/M99-TO-GEN. VIBE CBL | 10-320-0134 |
| 10. | 1EA | CABLE, INTERFACE, 991V - GEN VIB CBL, 1725/1730 | 10-320-0142 |

A. Equipment Set Up

1. Select an unused forward engine mount location on engine support housing and install the Vibration Sensor Mount, item 5, using the two bolts, item 4.

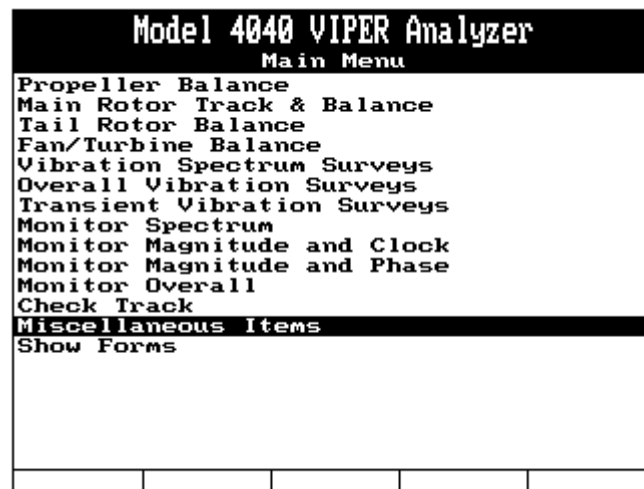


2. Install the selected vibration sensor, item 7 or 8, on the vibration sensor mount. Be sure the sensor is perpendicular to the center of the engine.
3. Connect the appropriate interface cable, item 9 or 10, to the selected sensor.
4. Connect the interface cable, item 9 or 10, to the socket end of the Generic Vibe Cable, item 2. Route the Generic Vibe Cable, item 2, to the cockpit or position where the analyzer will be located. Avoid hot areas and high voltage components in the routing. Secure the cable every 36 inches to the fuselage with duct or speed tape to avoid movement or possible ingestion into the engine.
5. Connect the Generic Vibe Cable, item 2, to the Channel A vibration input of the 4040 Analyzer, item 1.

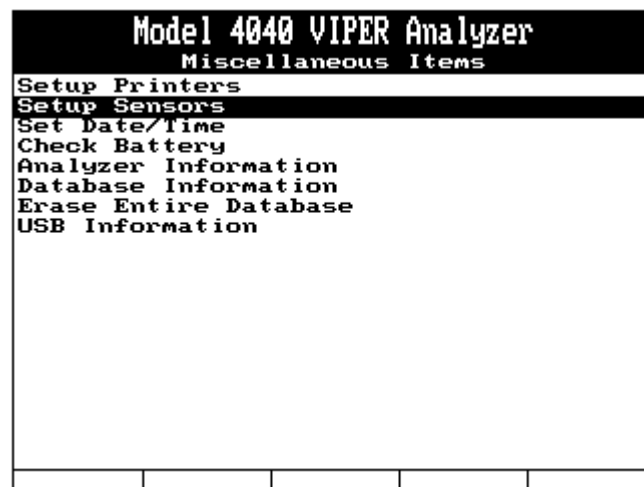


B. Analyzer Set Up

6. **Engine Vibration Survey Setup.**
7. This section will provide you with the steps to enter the Setup into the Viper Analyzer. If the setup has been previously entered, you need not repeat this step. If the setup is available, go to section C. Data Acquisition. Otherwise proceed to item 15 below.
8. Turn the analyzer on by pressing the ON/OFF key.
9. The analyzer has several default sensors already in memory. Other sensors may have also been programmed into the analyzer. To view the list of sensors already stored in the analyzers memory, do the following:
 - 9.1 From the Main Menu, select Miscellaneous Items.



- 9.2 From the Miscellaneous items menu, select Setup Sensors, then press [ENTER].



- 9.3 From the Manage Sensors menu, select Edit, then press [ENTER].

| Model 4040 VIPER Analyzer | | | | |
|---------------------------|--|--|--|--|
| Manage Sensors | | | | |
| Edit | | | | |
| New | | | | |
| Print | | | | |
| Print All | | | | |
| Delete | | | | |
| | | | | |

- 9.4 The Select menu will be displayed which lists all sensors currently programmed into the analyzers memory. If the sensor you are using is listed, you need not re-enter it. Go to item 11, otherwise press the [BACKUP] key, select New from the Manage Sensors menu and proceed with item 10 below.

| Select | | | | |
|--------|---|-----------------|--|--|
| 1 | > | 793 | | |
| 2 | > | AS907 ONBOARD | | |
| 3 | > | 991D-1 | | |
| 4 | > | 991V | | |
| 5 | > | 797V | | |
| 6 | > | BK 4383 W/510-2 | | |
| 7 | > | CH 7310 | | |
| | | | | |
| | | New | | |

10. Complete the Sensor Setup screen, shown below, as follows:

In the **Name:** field, enter the sensor name (793 or M99 for instance) Press the ↓ key to move to the next field.

Model 4040 VIPER Analyzer
Sensor Setup

Name: 793

Amplitude Units: g's

Probe Sensitivity: 100.000

Reverse Polarity: No

Input Type: Single Ended

In the **Amplitude Units:** field, use the \Rightarrow key to select units for the sensor. This is the engineering unit of output for the sensor such as g.'s for an accelerometer or IPS for a velocity sensor. Press the \Downarrow key to move to the next field.

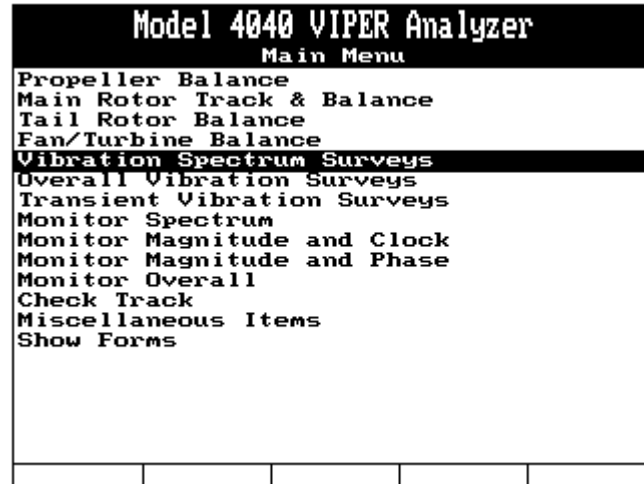
In the **Probe Sensitivity:** field, enter the mV per engineering unit as specified on the data sheet for the sensor you are using, such as 100 for 100 mV/g. Press the \Downarrow key to move to the next field.

In the **Reverse Polarity:** field, use the \Rightarrow key, if necessary, to select "Yes or No" as appropriate for the sensor you are using. This will normally be "No" indicating the sensor polarity is not reversed. Press the \Downarrow key to move to the next field.

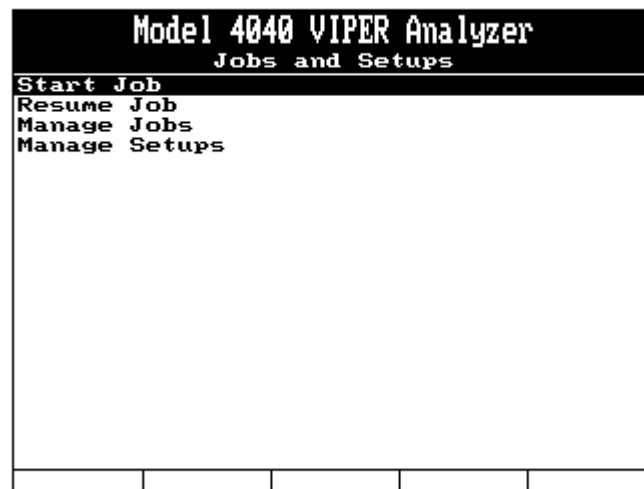
In the **Input Type:** field, use the \Rightarrow key, as necessary, to select "Differential or Single Ended" indicating the type input to the sensor.

When all fields are complete, press [ENTER] to accept and save. The screen will return to the "Manage Sensors" screen. From that screen, press [BACKUP] repeatedly until the Main Menu is again displayed.

10. From the Main Menu, select Vibration Spectrum Surveys and press [ENTER].



11. From the Jobs and Setups Menu, select Start Job, and press [ENTER]



12. If other setups have previously been entered in this analyzer, a Setup List will be displayed from which you may select a setup to use. Check to see if the TFE731-3A/B/C setup is among them. If it is, you may select it and continue with section C, DATA ACQUISITION of this document. If it is not among the listed setups, press the [F1] "New" key and proceed to step 13 below. If no setups have been previously entered in this analyzer, the Spectra Setup screen will be automatically displayed and you may proceed to step 13 below.

| Select Setup List | | | | |
|----------------------|--|--|------|--|
| 1 > 8044 TEST | | | | |
| | | | | |
| New | | | Copy | |

13. In the Spectra Setup screen complete each field as follows:

- 13.1 In the **Name** field, use the analyzer keypad to enter “TFE731-3A/B/C ENG SURV”. Press the [↓] key to move to the next field.
- 13.2 In the **Minimum Frequency** field, use the analyzer keypad to enter “1200”. Press the [↓] key to move to the next field.
- 13.3 In the **Maximum Frequency** field, use the analyzer keypad to enter “60000”. Press the [↓] key to move to the next field.
- 13.4 Use the [←] and [→] keys to select <RPM> in the frequency field. Press the [↓] key to move to the next field.
- 13.5 In the **Resolution** field, use the [←] and [→] keys to select <400>. Press the [↓] key to move to the next field.
- 13.6 In the **Blocks In Average** field, use the analyzer keypad to enter “4”. Press the [↓] key to move to the next field.
- 13.7 In the Sensor field, Channel A row, use the [←] and [→] keys to select the sensor you are using for this survey. If your sensor is not among the available selections, refer to step 9 of this section above to enter your sensor. Press the [↓] key to move to the next field.
- 13.8 In the **Desc** (Description) field, use the analyzer keypad to enter a description of the channel A sensor. In the example below we have entered the clock position of the sensor. Press the [↓] key repeatedly to move to the **Vibration** field.
- 13.9 In the **Vibration** field, use the [←] and [→] keys to select “IPS” for Inches Per Second. Press the [↓] key to move to the next field.
- 13.10 In the **Modifier** field, use the [←] and [→] keys to select “Peak”. Press the [↓] key to move to the next field.

- 13.11 In the **Full Scale Vibration** field, use the [⇐] and [⇒] keys to select the highest amplitude you expect to encounter during the survey. In normal circumstances, 1 or 2 will suffice for the TFE731.

```

Model 4040 VIPER Analyzer
Spectra Setup
Name: TFE731-3ABC ENG SURV
Minimum Frequency: 1200.00
Maximum Frequency: 60000.00 (RPM)
Resolution: 400 lines
Average Type: Peak
Blocks in Average: 4
Channel      Sensor      Desc
A: 793        2.00
B: None
C: None
D: None
Vibration: IPS
Modifier: Peak
Full Scale Vibration: 2.00
Edit Conds  Speeds     Limits

```

14. When all fields in the above screen are set, press the [F3] “Limits” key. The function fields (directly above the five function keys) will change to the configuration shown in the example screen below. If you are using a single channel to collect the vibration survey, press the [F1] “A-Limits” key.

```

Model 4040 VIPER Analyzer
Spectra Setup
Name: TFE731-3ABC ENG SURV
Minimum Frequency: 1200.00
Maximum Frequency: 60000.00 (RPM)
Resolution: 400 lines
Average Type: Peak
Blocks in Average: 4
Channel      Sensor      Desc
A: 793        2.00
B: None
C: None
D: None
Vibration: IPS
Modifier: Peak
Full Scale Vibration: 2.00
A-Limits    B-Limits    C-Limits    D-Limits    Back

```

- 14.1 Complete the **Edit Limits for Channel A:** screen as follows:
- 14.1.1 In the **F-low** (Frequency – low) field for row 1, the frequency will be defaulted to “0.00”. Leave this field in the default 0.00 and press the [↓] key to move to the next field.
- 14.2 In the **F-high** (Frequency – high) field for row 1, use the analyzer keypad to enter “2400”. Press the [↓] key to move to the next field.
- 14.2.1 In the **Unit** field for row 1, use the [⇐] and [⇒] keys to select “xRPM”. Press the [↓] key to move to the next field.

- 14.2.2 In the **Limit** field for row 1, use the analyzer keypad to enter 2.5. Press the [↓] key to move to the next field.
- 14.2.3 In the **F-low** field for row 2, use the analyzer keypad to enter 2400. Press the [↓] key to move to the next field.
- 14.2.4 In the **F-high** field for row 2, use the analyzer keypad to enter 11400. Press the [↓] key to move to the next field.
- 14.2.5 In the **Unit** field for row 2, use the [⇐] and [⇒] keys to select “xRPM”. Press the [↓] key to move to the next field.
- 14.2.6 In the **Limit** field for row 2, use the analyzer keypad to enter 0.35. Press the [↓] key to move to the next field.
- 14.2.7 In the **F-low** field for row 3, use the analyzer keypad to enter 11400. Press the [↓] key to move to the next field.
- 14.2.8 In the **F-high** field for row 3, use the analyzer keypad to enter 60000. Press the [↓] key to move to the next field.
- 14.2.9 In the **Limit** field for row 3, use the analyzer keypad to enter 0.35. Press the [↓] key to move to the next field.
- 14.2.10 In the **Limit** field for row 3, use the analyzer keypad to enter 0.7. Press the [ENTER] key to accept your settings and return to the Spectra Setup screen.

| Model 4040 VIPER Analyzer | | | | |
|---------------------------------|----------|----------|---------|---------|
| Edit Limits for Channel A: 2.00 | | | | |
| | F-low | F-high | Unit | Limit |
| 1) | 0.00 | 2400.00 | xRPM | 2.50 |
| 2) | 2400.00 | 11400.00 | xRPM | 0.35 |
| 3) | 11400.00 | 60000.00 | xRPM | 0.70 |
| 4) | 0.00 | 0.00 | xCSI | 0.00 |
| 5) | 0.00 | 0.00 | xCSI | 0.00 |
| 6) | 0.00 | 0.00 | xCSI | 0.00 |
| 7) | 0.00 | 0.00 | xCSI | 0.00 |
| 8) | 0.00 | 0.00 | xCSI | 0.00 |
| 9) | 0.00 | 0.00 | xCSI | 0.00 |
| 10) | 0.00 | 0.00 | xCSI | 0.00 |
| 11) | 0.00 | 0.00 | xCSI | 0.00 |
| 12) | 0.00 | 0.00 | xCSI | 0.00 |
| 13) | 0.00 | 0.00 | xCSI | 0.00 |
| 14) | 0.00 | 0.00 | xCSI | 0.00 |
| CopyToAll | | CopyToB | CopyToC | CopyToD |

15. Press the [ENTER] key when the Spectra Setup screen, shown below is again displayed to accept your settings and continue.

| Model 4040 VIPER Analyzer | | | |
|---------------------------|----------------------|--------|--|
| Spectra Setup | | | |
| Name: | TFE731-3ABC ENG SURV | | |
| Minimum Frequency: | 1200.00 | | |
| Maximum Frequency: | 50000.00 | (RPM) | |
| Resolution: | 400 | lines | |
| Average Type: | Peak | | |
| Blocks in Average: | 4 | | |
| Channel | Sensor | Desc | |
| A: | 793 | 2.00 | |
| B: | None | | |
| C: | None | | |
| D: | None | | |
| Vibration: | IPS | | |
| Modifier: | Peak | | |
| Full Scale Vibration: | 2.00 | | |
| Edit Conds | Speeds | Limits | |

16. When the Customer Information screen, shown below, is displayed. At this time you may turn the analyzer off or continue. Complete the optional fields using the keypad. Move from field to field using the [↓] key. While the cursor is in the **Name** field, you may press the [F1] “Names” key and select a name from a list of previously entered names. Press [ENTER] to accept your inputs and continue.

| Model 4040 VIPER Analyzer | | | |
|--|----------------------|--|--|
| Customer Information | | | |
| Enter the following optional Customer information. | | | |
| Name: | <input type="text"/> | | |
| A/C Registration: | <input type="text"/> | | |
| A/C Total Time: | 0.0 | | |
| Press ENTER to continue | | | |
| Names | | | |

17. The Engine Information screen, shown below, will be displayed. Complete the optional fields using the keypad. Move from field to field using the [↓] key. While the cursor is in the **SN** field, you may press the [F1] “Serial Nos” key and select a serial number from a list of previously entered numbers. Press [ENTER] to accept your inputs and continue.

| Model 4040 VIPER Analyzer | | | | |
|---------------------------|---|--|--|--|
| Engine Information | | | | |
| Position: | | | | |
| 1 | | | | |
| Propeller: | | | | |
| S/N | | | | |
| Type | | | | |
| TSO | 0 | | | |
| TSN | 0 | | | |
| Engine: | | | | |
| S/N | | | | |
| Type | | | | |
| TSO | 0 | | | |
| TSN | 0 | | | |
| Serial Nos | | | | |

C. Data Acquisition

18. The information screen below will be displayed directing you to Start the Engine and Establish Normal Operating Conditions. At this time you should start the engine per normal procedures. Calculate the N1 for the day while the engine warms up. When the engine is at normal operating temperatures, press the [F5] “Continue” key.

| Model 4040 VIPER Analyzer | | | | |
|---|--|--|--|----------|
| Start Engine | | | | |
| <p>Start the Engine</p> <p>and</p> <p>Establish Normal Operating</p> <p>Conditions.</p> | | | | |
| | | | | Continue |

19. After pressing the “Continue” key from the screen above, a STANDBY information, shown below, will be displayed. Do not accelerate the engine while this screen is displayed. Wait for the STANDBY screen to extinguish and be replaced by the spectrum.

| Model 4040 VIPER Analyzer | | | | |
|---------------------------|--|--|--|----|
| Store the Data? | | | | |
| Yes | | | | No |

21. The next screen displayed will be the Shutdown screen shown below. As indicated, the requirements for the Survey are complete and you should now Perform a Normal Shutdown of the engines. Press the [F5] key to acknowledge and Continue. This terminates the job. If you wish to review the survey you may do so by accessing the Manage Jobs | Review function of the Vibration Spectrum feature. Refer to the 4040 or AvTrend users manual for printing the survey.

| Model 4040 VIPER Analyzer | | | | |
|---|--|--|--|----------|
| Survey is complete! Perform Normal Shutdown Sequences | | | | |
| | | | | Continue |



Application Note

Engine Type : TFE731-3A/B/C

Procedure : Engine Vibration Survey

Part Number: 11-200-0133

AppNote Number: E-HO-TFE731-3A/B/C-4040-VI

This Application Note is provided for information only and does not supercede the requirements or guidelines set forth in the applicable engine or airframe maintenance manual. Technology for Energy Corporation assumes no obligation or liability, either express or implied, to the Purchaser arising out of the use of this procedure.

Copyright © 2002, TEC Aviation Division. All rights reserved. This document is to be printed and reproduced for personal use only.