



Application Note

Application Note Number	G-GEN-4040-DT
Version	1
Function	Transferring Data 4040 - AvTrend
Airframe	ALL
Engine	ALL
E-Setup Number	N/A
ACES Systems Analyzer	4040
Firmware Version	1.04 or higher
Procedure	N/A

Introduction

This Application Note details the process of transferring collected data from an ACES Viper 4040 Analyzer to a PC with ACES AvTrend acting as the host software.

The following ACES Systems' equipment is required.

Item	Quantity	Description	Part Number
1.	1EA	Analyzer, Viper 4040	10-100-4040
2.	1EA	Cable, Comm, 2020/4040	10-320-0157
3.	1EA	Software, ACES AvTrend	10-700-1003

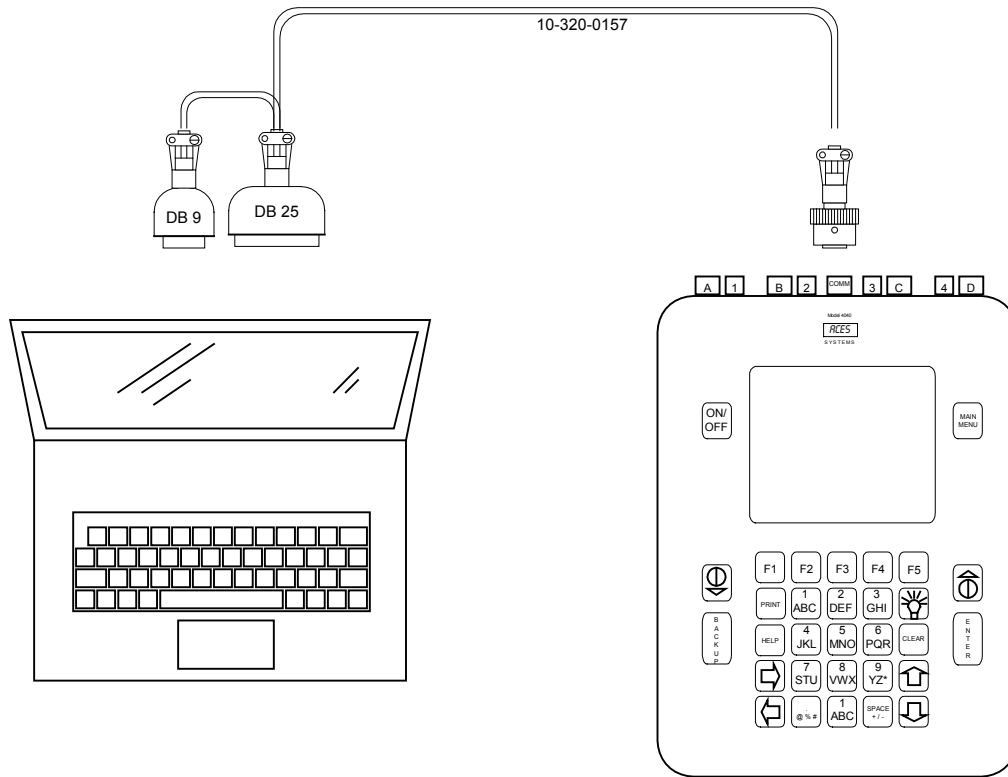
A. Equipment Set Up

1. If not previously installed, install the AvTrend software, item 3, on the computer you intend to use.

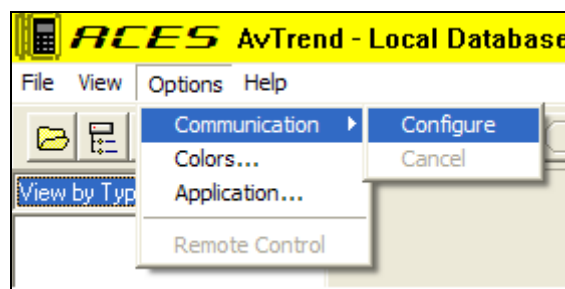
NOTE

If you do not have the most current version of the AvTrend software, you may automatically update your installed version by visiting <http://www.acesystems.com/applications.htm> and clicking on "AvTrend Update".

2. Connect the six-pin MS connector of the Comm Cable, item 2, to the AUX/COMM port of the 4040 Analyzer, item 1.
3. Connect either the six-pin or the 25 pin DB connector of the Comm Cable, item 2, as appropriate, to an available comm port on your computer.
4. Start the AvTrend program by clicking on the AvTrend icon on your desktop.
5. Turn the Viper 4040 Analyzer ON by pressing the ON/OFF key.



- From the AvTrend menu bar, use your computers mouse to select **OPTIONS | COMMUNICATIONS | CONFIGURE**.



- The communications dialog box will be displayed in the center of the AvTrend screen. Use your computer mouse and click on the drop down option of the “Port” field. You should have selections for all available communications ports on your computer. The default is COMM1 if that port is available. Choose the COMM port that you have connected the communications cable of the 4040 analyzer to.

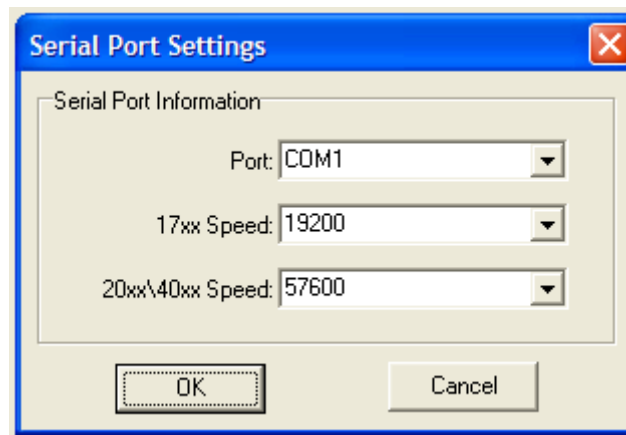
NOTE

If no selections are displayed, this means that AvTrend has detected no available ports. If you have software for peripheral devices such as a Personal Organizer installed on your computer, you may need to exit or disable that program in order to make a comm port available.

The “17XX Speed:” field is for use with the 1700 series ACES analyzer and will have no bearing on the use of a Viper 4040 analyzer with AvTrend software.

The “20xx\40xx Speed:” field will default to 57600. This speed should be sufficient for all 4040 transfers. It is not necessary to set the Transfer speed in the 4040 analyzer since the analyzer automatically detects this setting.

Click on the “OK” button to accept your settings and exit back to the main screen of AvTrend.



- If the connections made in steps 2 and 3 above are correct and the selected comm port is available the blue CONNECTED indicator light in the upper right corner of the screen will illuminate as shown in the example below.



- If the Port selection was made in a previous session of AvTrend and the computer was shut down, you may encounter the red circle and diagonal slash over the connect indicator as shown below when you restart AvTrend. This will occur when the computer is restarted and

software for a peripheral device is automatically started. The peripheral device software then takes control of the specified comm port again. This indication will only be seen when the selected comm port is not available for use with AvTrend. To remedy this situation you need only exit or deactivate the peripheral software causing the conflict. You may alternately choose another comm port if one is available.

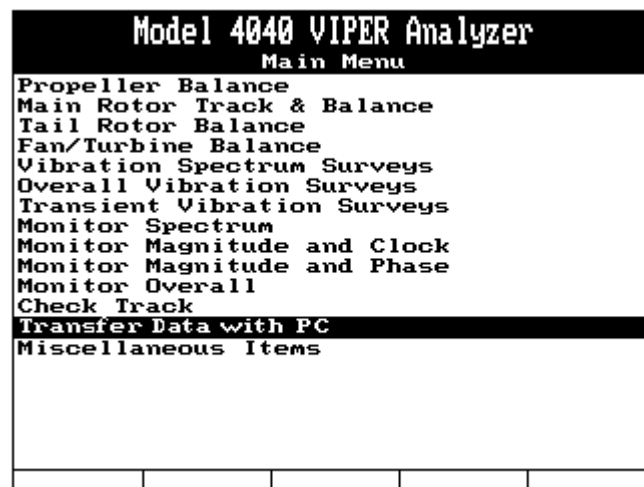


10. If a successful connection is made and verified by the blue indicator in step 8 above, the blue light will turn to gray, as shown in the example below, if the serial comm cable is disconnected from the selected comm port.

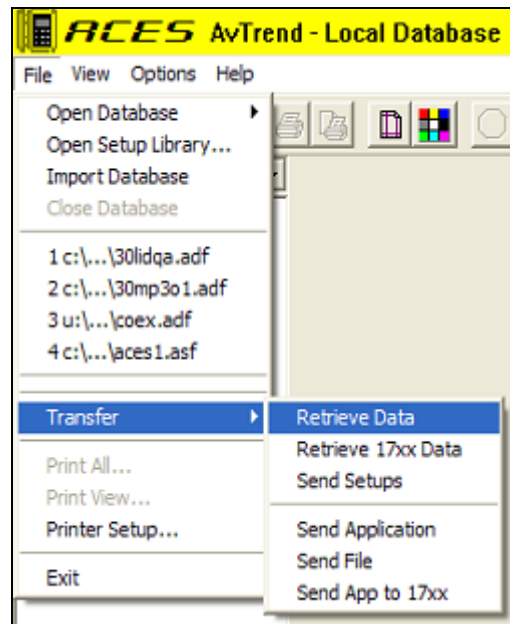


B. Data Transfer

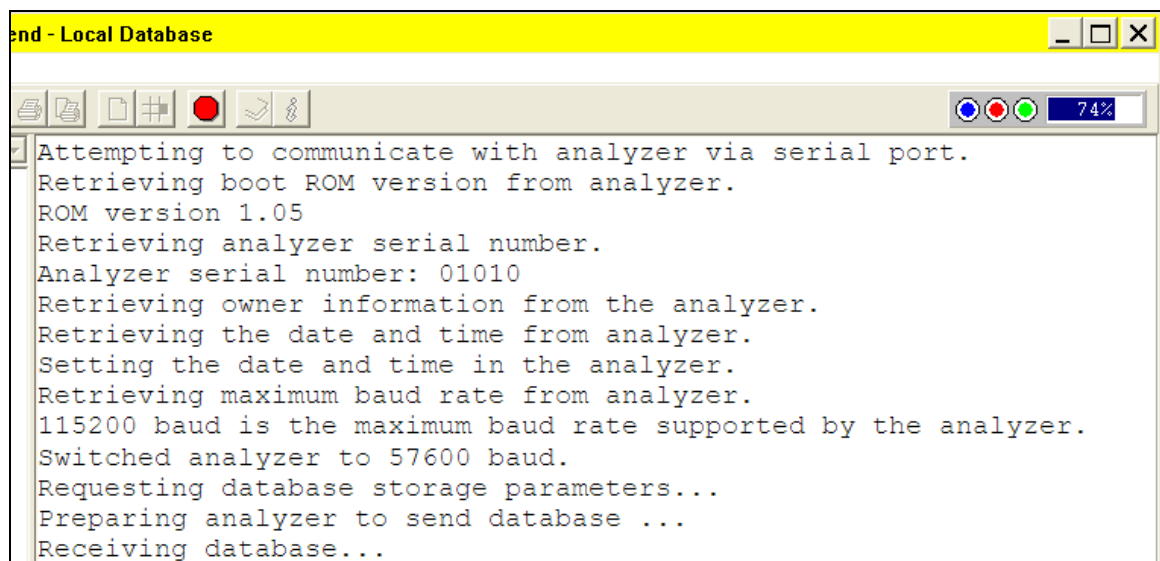
11. From the 4040 Analyzer Main Menu, select “Transfer Data with PC” and press [ENTER]



12. Using your computers mouse pointer on the AvTrend main screen, select FILE | TRANSFER | RETRIEVE DATA.



12. The analyzer will indicate “Transferring Data with host.” The AvTrend screen will display progressive information as shown in the example below. Notice that the three indicator lights in the upper right corner of the screen are lighted to indicate a good connection (blue) and active data transmission (red and green). The progression bar immediately to the right of the indicator lights will show the percentage of the total transfer that is complete.





Application Note

Data Type: All

Procedure: AvTrend-4040-Data Transfer

Part Number: 11-200-0147

AppNote Number: G-GEN-4040-AvTrend Data Transfer

This Application Note is provided for information only and does not supercede the requirements or guidelines set forth in the applicable engine or airframe maintenance manual. Technology for Energy Corporation assumes no obligation or liability, either express or implied, to the Purchaser arising out of the use of this procedure.

Copyright © 2002, TEC Aviation Division. All rights reserved. This document is to be printed and reproduced for personal use only.