



# Application Note

---

## **Bell 206A/B**

### **Tail Rotor Balance**

**Part Number: 11-200-0006**

**AppNote Number: A-BE206B-2020-TR (Rev. 2.2, May 2005)**

This Application Note is provided for information only and does not supersede the requirements or guidelines set forth in the applicable engine or airframe maintenance manual. Technology for Energy Corporation assumes no obligation or liability, either expressed or implied, to the Purchaser arising out of the use of this procedure.

Copyright © 2001, 2005, TEC Aviation Division. All rights reserved. This document is to be printed and reproduced for personal use only.



# Application Note

Application Note Number	A-BE206B-2020-TR
Revision	2.2 (From Airframe Manual obtained 6/2004)
Function	Tail Rotor Balance
Airframe	Bell 206A/B
Engine	N/A
E-Setup Number	a-be206b-2020-tr.asf
ACES Systems Analyzer	Model 2020 or Model 2020 with EPS
Boot/App Version	2.02/2.05c or later
Procedure	N/A

## Introduction

This Application Note covers the required equipment, equipment installation, analyzer setup, data acquisition and solution process for using the ACES Systems Model 2020 with the Tail Rotor Enhanced Performance Software (EPS) option to perform a tail rotor balance on the airframe listed above. General instructions for the use of the Model 2020 can be found in the Model 2020 User Manual #2020-OM-01 (P/N 75-900-2020), Enhanced Performance Software Operational Supplement #2020-OM-02 Supplement 1 (P/N 75-900-2022), and Optical Tracker Operational Supplement #540-OM-1 (P/N 75-900-2021). All procedures for track and balance and all adjustments should be made in accordance with the Airframe Maintenance Manual.

## A. Equipment Setup

**Required Equipment:** The following equipment is required to perform a Tail Rotor Track and Balance:

Item	Quantity	Description	Part Number
1.	1	Analyzer, Model 2020	10-100-2020
2.	1	Tachometer, Optical, Phototach (New)	10-100-1773*
3.	1	Cable, Tach, Generic, 50'	10-320-0126*
4.	1	Sensor, Vibe, Accel, 991D-1	69-100-0075
5.	1	Cable, Sensor 991D-1, 50'	10-320-0163
6.	1	Mount, 1/4X28 Sensor, Vibe 1/4" Hole, S/Stl	22-430-0035
7.	1	Tape, Reflective, Roll, 10'	10-400-0176



8.	1	Mount, Phototach, B-206	10-100-0486
9.	1	Option, 2020 Enhanced Tail Rotor	11-900-0002**

\*This listing shows the latest design parts. It is acceptable to perform this task using previous designs with the appropriate accessories. For compatibility issues, contact ACES Systems.

\*\*Using the Enhanced Tail Rotor Option will require entries on screens not found in the standard 2020 software. If your 2020 does not display all of the following screens, contact ACES Systems to learn about the benefits and availability of EPS.

### Miscellaneous Equipment

Tape or tie wraps to secure cables to airframe.

If adjustments are to be made to the tail rotor balance, use only hardware or balance weights that are specified in the applicable airframe maintenance manual.

## B. Equipment Installation

1. Place the Model 2020 Analyzer (Item 1) in the flight compartment.
2. Install the 991D-1 Vibration Sensor (Item 4) into the 1/4 x 28 Sensor Mount (Item 6) and attach to the left hand side of the tail boom with the connector pointed down. **The connector must point down.** (Figure 1)

#### NOTE

**Secure and route cables as not to interfere with hot or rotating components.**

3. Install the Phototach (Item 2) into the Phototach Mount (Item 8) and attach to center gearbox fairing bolt under the tail boom where the lower fairing meets the vertical stabilizer. (Figure 2).

#### NOTE

**See Paragraph D. 2 for additional installation instructions of Phototach and Tape.**

4. Connect the end of the 50' Tachometer Cable (Item 3) to the Phototach. Wrap the Cable forward around the tail-boom away from rotating components to the cabin. Connect the opposite end of the Cable to the analyzer to "Tach 1".
5. Connect the 50' Vibration Sensor Cable (Item 5) to the Vibration Sensor. Wrap the cable forward around the tail-boom away from rotating components to the cabin. Connect the opposite end of the Cable to vibration "Channel A" on the analyzer.
6. (Optional) Number the holes on tail rotor balance wheel (Figure 3), this will aid in the application of balance weights. If this step is omitted, be sure to refer to the diagram shown in Figure 3 for the proper hole assignments when placing weight on the tail rotor balance wheel in accordance with the analyzer supplied solutions.

- 7. Secure all cables to the airframe to prevent them from becoming involved with any rotating components or aircraft controls.

**Equipment Installation Diagram**

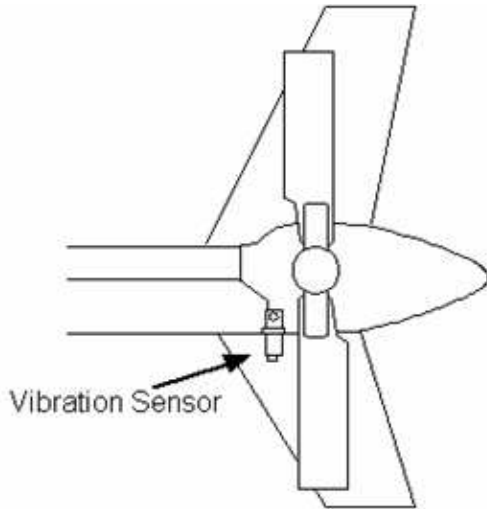


Figure 1

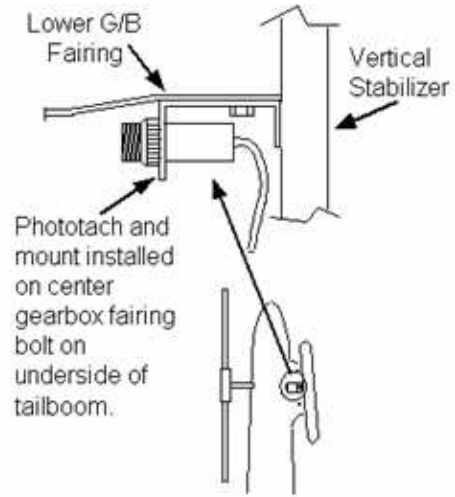


Figure 2

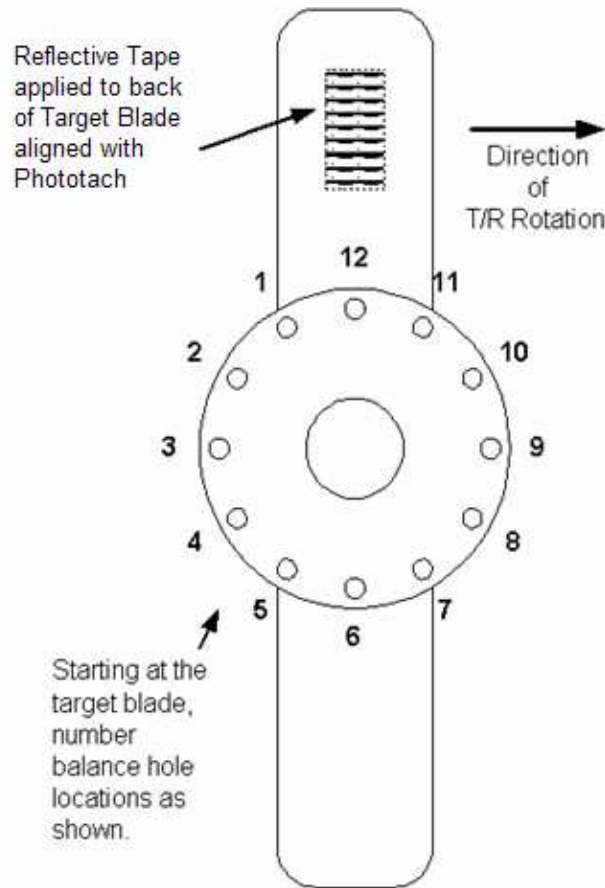
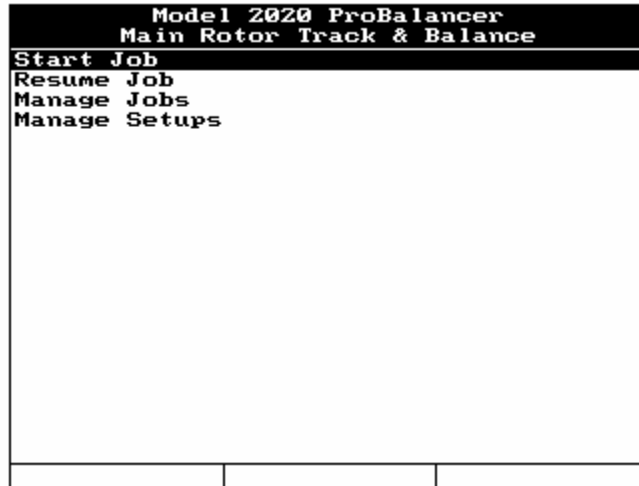


Figure 3

## C. Analyzer Set Up

---

1. Insure the analyzer battery is charged prior to starting the job.
2. Turn the analyzer ON by pressing the [ON/OFF] key.
3. From the Main Menu shown below, select “Tail Rotor Balance” and press the [ENTER] key.
4. From the Tail Rotor Balance Menu shown below, select “Start Job” and press the [ENTER] key.



5. If the Bell 206A/B is listed in the Setup List, select it using the [↓] key, press [ENTER] and go to Section D below. If the Bell 206A/B is not in the Setup List, press the [F1], “New” key and go to step 6 below.



6. The “Tail Rotor Setup” screen now appears. Enter the Tail Rotor Setup as shown below. When completed press [ENTER].

**Model 2020 ProBalancer  
Tail Rotor Setup**

Name: BELL 206A/B

Sensor Chan: A

Sensor: 991D-1

Tach Chan: 1

Tach Type: Optical

Tach Pos: 6

Balancing RPM: 2550

Rotor Direction: CW

Number of Blades: 2

Conditions: 1

Max Baln. Wts: 15.0

7. The “Tail Rotor Chart Setup” screen will appear next as displayed below. Enter the information as indicated in the illustration below. Press [ENTER] to continue.

**Model 2020 ProBalancer  
Tail Rotor Chart Setup**

Name: BELL 206A/B

Chart Type: Regular

Num WtPos: 12

Grams/IPS: 10.000

WtPos	Add @	WtPos	WtPos
1	1 : 00	8	
2	2 : 00	9	
3		10	
4		11	
5		12	
6			
7			

WtPos MUST be in CW or CCW order

8. The analyzer will ask if you want to save and store this setup. Selecting [F1] “Yes” will save this setup for use on a similar model in the future. This will eliminate the need to reenter the above data before starting a new job. Selecting [F3] “No” will not store the data. If another helicopter of the same model is balanced in the future, the setup data will need to be entered before another job can be started.

Model 2020 ProBalancer Store this new setup?		
Store this new setup?		
Yes		No

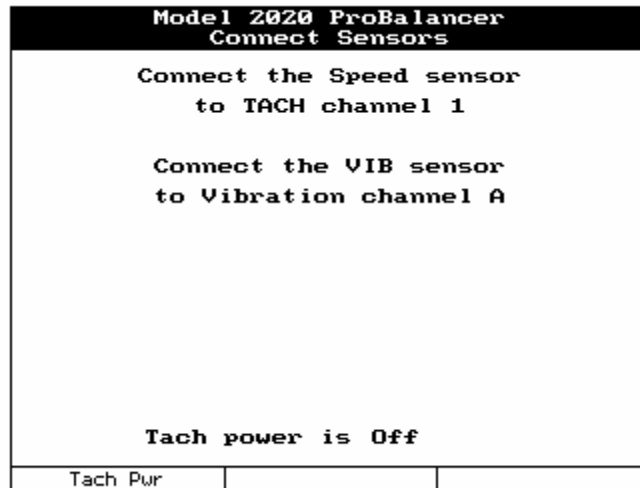
## D. Data Acquisition

---

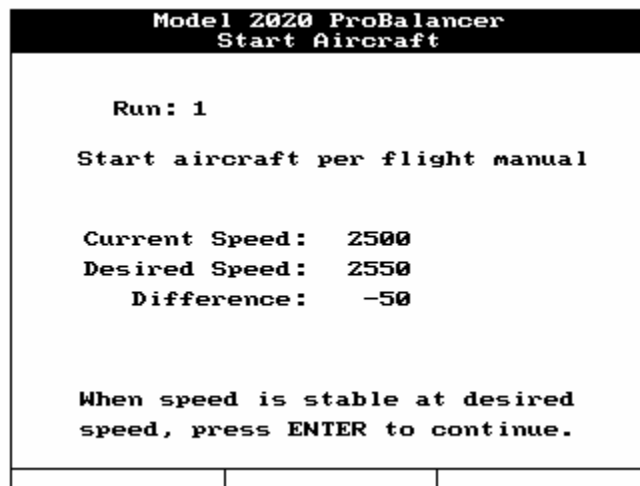
1. The Customer Information Screen will be displayed, as shown below. Use the analyzer keypad to enter a customer name in the “Name:” field. The analyzer will maintain a list of customer names as new names are entered. If names have been previously entered into this analyzer, you may press the [F1] “Names” key and select a customer's name from the provided list. Press the [↓] key to move to the next field and use the analyzer keypad to enter the optional aircraft registration and aircraft total time as required. When all fields are complete, press the [ENTER] key to accept and continue.

Model 2020 ProBalancer Customer Information		
Enter the following optional Customer Information.		
Name:	CUSTOMER NAME	
A/C Registration:	N1234	
A/C Total Time:	123.4	
Press ENTER to continue.		
Names		

2. The next screen to be displayed will be the “Tail Rotor Equipment Setup” screen as illustrated below. This screen gives instructions on installing sensors and cables. You may also check the Phototach alignment by pressing the [F1] “Tach Pwr” key which supplies power to the optical tachometer for checking alignment with the reflective tape.

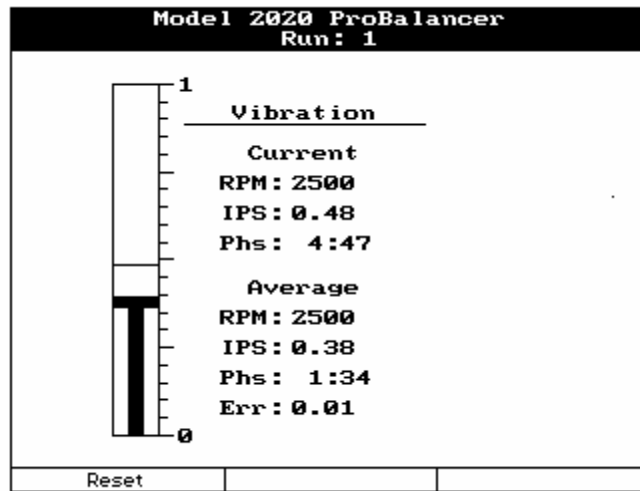


- a. Press [F1] “Tach Pwr”. Select a blade to be identified as the target blade. (See Section B Figure 3)
  - b. Hold a 3-inch piece of reflective tape, reflective surface facing the Phototach, against the backside of the blade. Do not remove backing at this point.
  - c. The red “Gate” light on the back of the Phototach should illuminate as the reflective tape is properly aligned in front of the LED. Clean an area of the blade in preparation for mounting the reflective tape.
  - d. Remove the backing and install the reflective tape on the clean blade surface.
  - e. Press [ENTER] when finished with Tape installation.
3. The “Start Aircraft” screen will be displayed with instructions to “Start Aircraft per Flight Manual”. When the aircraft is started and normal operating conditions have been established, press the [ENTER] key to continue.



4. The analyzer will present the data acquisition screen as shown. This screen allows you to monitor both the current and averaged vibration readings. While monitoring the measurement, you may press the [F1] “Reset” key to restart the averaging process. Use this

feature as a way to validate the quality of the measurement. If the averaged readings return to a value similar to that prior to being “Reset”, the measurement can be considered good. If the measurement is not similar, you may choose to “Reset” the average again.



See the Model 2020 User Manual #2020OM-01 (P/N 75-900-2020) Chapter 16 for detailed instructions on how to read the “Converging Vibration Indicator and Scale.”



- You will be prompted to “Shut Down Aircraft”. Press [F3] to proceed as shown above. The “Review Prior Run(s) Data” screen will appear as shown below. This screen allows the user to view the vibration readings that were acquired during the condition. Press [F1] to “Retake” the data or [ENTER] to continue. Pressing [F3] will “Quit Job”.

Model 2020 ProBalancer Review Prior Run(s) Data			
Run	RPM	IPS	Clock
1	2500	0.380	1:34
Retake #1			Quit Job

6. The analyzer will present a warning screen similar to the one shown below. Since all weight suggestions are in addition to the previous tail rotor condition, you are cautioned not to exceed the limit defined in the setup. Press [F3] “Continue” to acknowledge the warning and proceed.

Model 2020 ProBalancer * WARNING *	
<p>The maximum tail rotor weight defined in the setup is 15.00 grams.</p> <p>You must ensure that the total weight does not exceed 15.00 grams, regardless of what the analyzer suggests.</p>	
	Continue

7. The “T/R Sugg. & Inst. Wts” screen will present a suggested solution based on the chart created in the original setup and the vibration IPS and clock reading. The suggested correction will appear across the top of the screen. You have the opportunity to install the suggested weight corrections or decide on a different corrective action. It is important that the entry under the “Enter Installed Wts” reflect the actual weight amounts and locations used.

Model 2020 ProBalancer T/R Sugg. & Inst. Wts			
Run 1		Suggestion:	
1	2.6	2	3.3
Enter Installed Wts			
1	2.5	11	0.0
2	3.0	12	0.0
3	0.0		
4	0.0		
5	0.0		
6	0.0		
7	0.0		
8	0.0		
9	0.0		
10	0.0		
Inst=Sugg		Inst=None	
		Quit Job	

Using the keypad, record the actual weight(s) installed between runs and their location. As you can see in the example above, the correction actually installed was 2.5 grams in the #1 hole and 3.0 grams in the #2 hole. If you choose to remove weight from an opposite or alternate position, enter the negative adjustment. Do this by moving the highlight to the appropriate field, press the [SPACE+/-] key to produce a (-).

To remove all values in the suggested column use the [F2] "Inst=None" key. If you decide you would like to revert back to the suggested weights use [F1] "Inst=Sugg" key.

The [F3] "Quit Job" exits the balance job with no provisions to resume the job at a later point in time. If you wish to leave the job and be able to resume it later, press the [MAIN MENU] key.

- When you have finished with the solution process, press [ENTER] and you will be taken to the "Start Aircraft" screen as shown in paragraph 4 of this section to continue the balance process.

## E. Quit Job

---

- Repeat steps D.3 through D.8 applying the solutions as necessary. When you are satisfied with the balance results, you can quit the job from any screen displaying the [F3] "Quit Job" key. This will mark the job as complete and take you to Paragraph 2 below.

Model 2020 ProBalancer Update Setup ICFs?		
Do you want to update the setup's influence coefficients based on the result of this job?		
Yes		No

- From this screen, decide if you would like to update the ICF used in the original setup. Pressing **[F1]** “Yes” will add the chart corrections from this job to the ICF from the original setup. This can be a powerful tool when using this setup in the future. The chart corrections learned as a result of the previous job will be applied from the beginning of the next job that uses the same setup. This can reduce the number of runs required to balance the helicopter. If you select **[F3]** “No” any chart corrections applied during the previous job will be discarded. The setup will revert to the chart settings in place before the job was started. This can be useful if the helicopter didn't respond as others of the same model or if a mistake was made somewhere during the job that caused extra runs to balance the helicopter.